

Updating the System Firmware

This document describes how to update the system firmware in the cutter/plotter.

Tools

- (1) Firmware file: FC8000vxxx.X
- (2) Utility software for transferring the firmware file: SEND.exe
- (3) Windows PC that the Windows driver for FC8000 is already installed.
- (4) USB Cable.

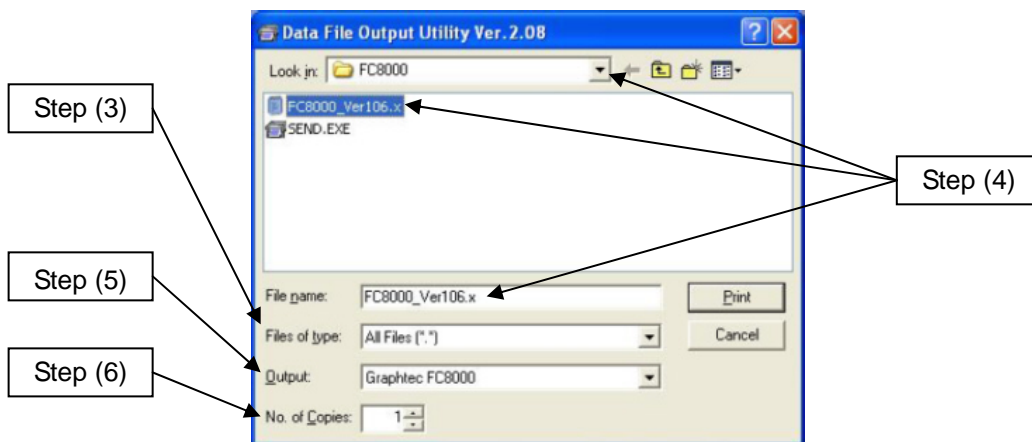
Preparing the computer

It is necessary to install the Windows driver before start to update the firmware.

- (1) Copy the firmware file and the utility software (send) to the working folder.
- (2) Start the utility software for transferring the firmware file by double-clicking the icon of the SEND.

The following figure is displayed.

Note: This figure shows the case of FC8000



- (3) Change the "Files of type:" to the "All Files [*.*)" using the pull down menu.
- (4) Select the firmware file. Use the pull down menu of the "Look in:" to specify the location of the file. Select the firmware file from the file list or enter the firmware file name to the "File Name:" column.
- (5) Select the "Output:" to the model of the cutter/plotter that is the Graphtec FC8000 in this case using the pull down menu. When the Windows driver is not installed, the model of the cutter/plotter is not displayed.
- (6) Set the "No. of Copies:" to the "1" using the pull down menu.

Preparing the cutter/plotter

- (1) Load the media either of a roll or a sheet in the cutter/plotter.
- (2) Press the RIGHT ARROW key and the LEFT ARROW key simultaneously while the power of the cutter/plotter is turned on. Or press the RIGHT ARROW key and the LEFT ARROW key simultaneously within two (2) seconds after the power of the cutter/plotter is turned on.
- (3) The following message is displayed in the LCD.

UPDATE ?	No
----------	----

- (4) Select "Yes" using the UP ARROW key or the DOWN ARROW key.

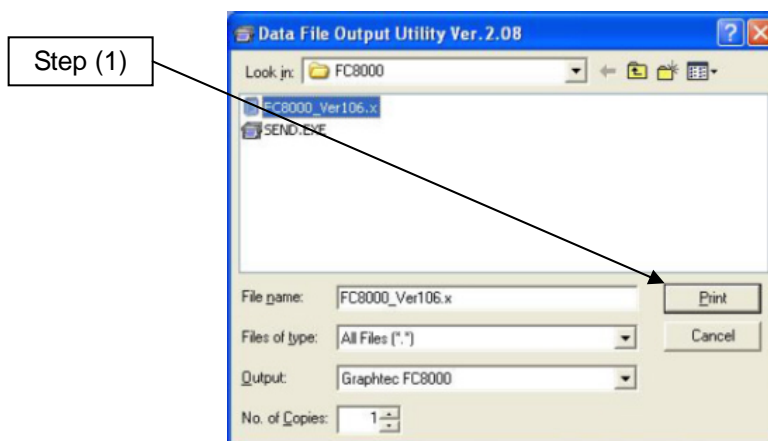
UPDATE ?	Yes
----------	-----

Press the ENTER key. Then the following message is displayed.

PLEASE SEND PRG.

Updating the system firmware

- (1) Click the "Print" button in the utility software for transferring the file to the cutter/plotter.



Note: This figure shows the case of FC8000

- (2) The following message is displayed in the cutter/plotter after the data transfer is started.

xxx KB RECEIVED

- (3) As the firmware data is successfully transferred, the number of transferred bytes shown on the LCD increases. When the transfer is completed, the display automatically changes to the following message, and the system begins writing to flash memory.

CLEAR SECT. = xx

xxxKB COMPLETED

- (4) The cutter/plotter will start the initialization process after the updating firmware process has been completed.

Check the firmware version that is displayed in the initialization process.

- (5) Turn off the power of the cutter/plotter.