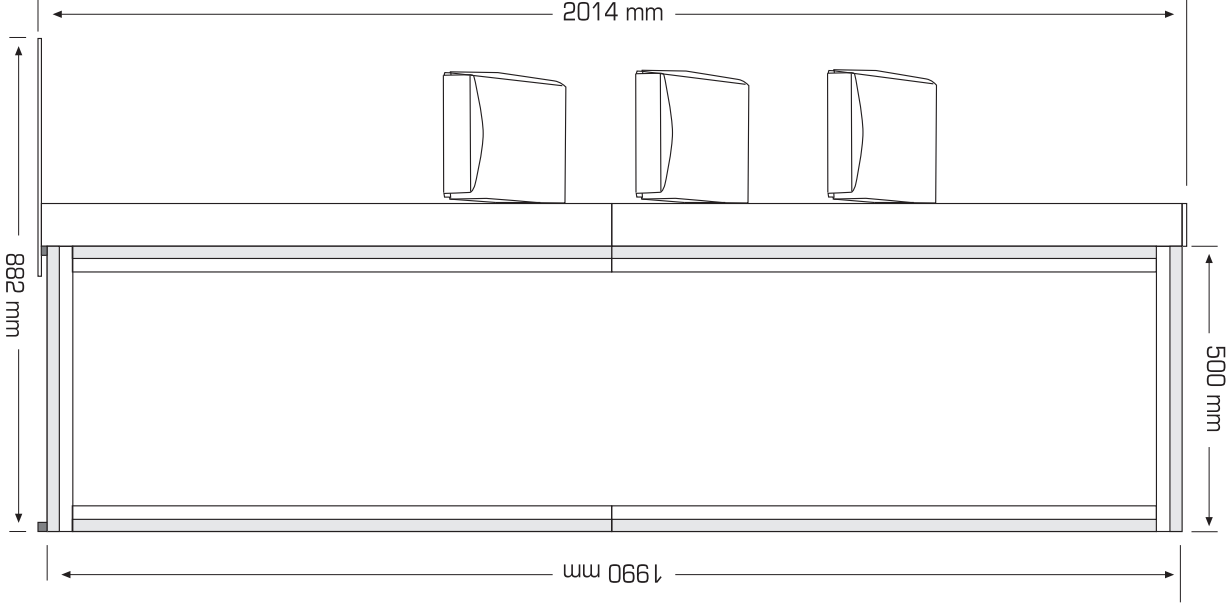
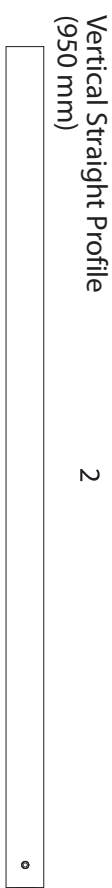
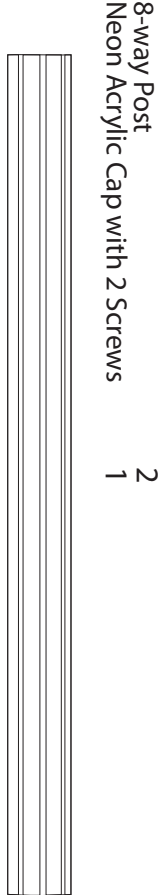
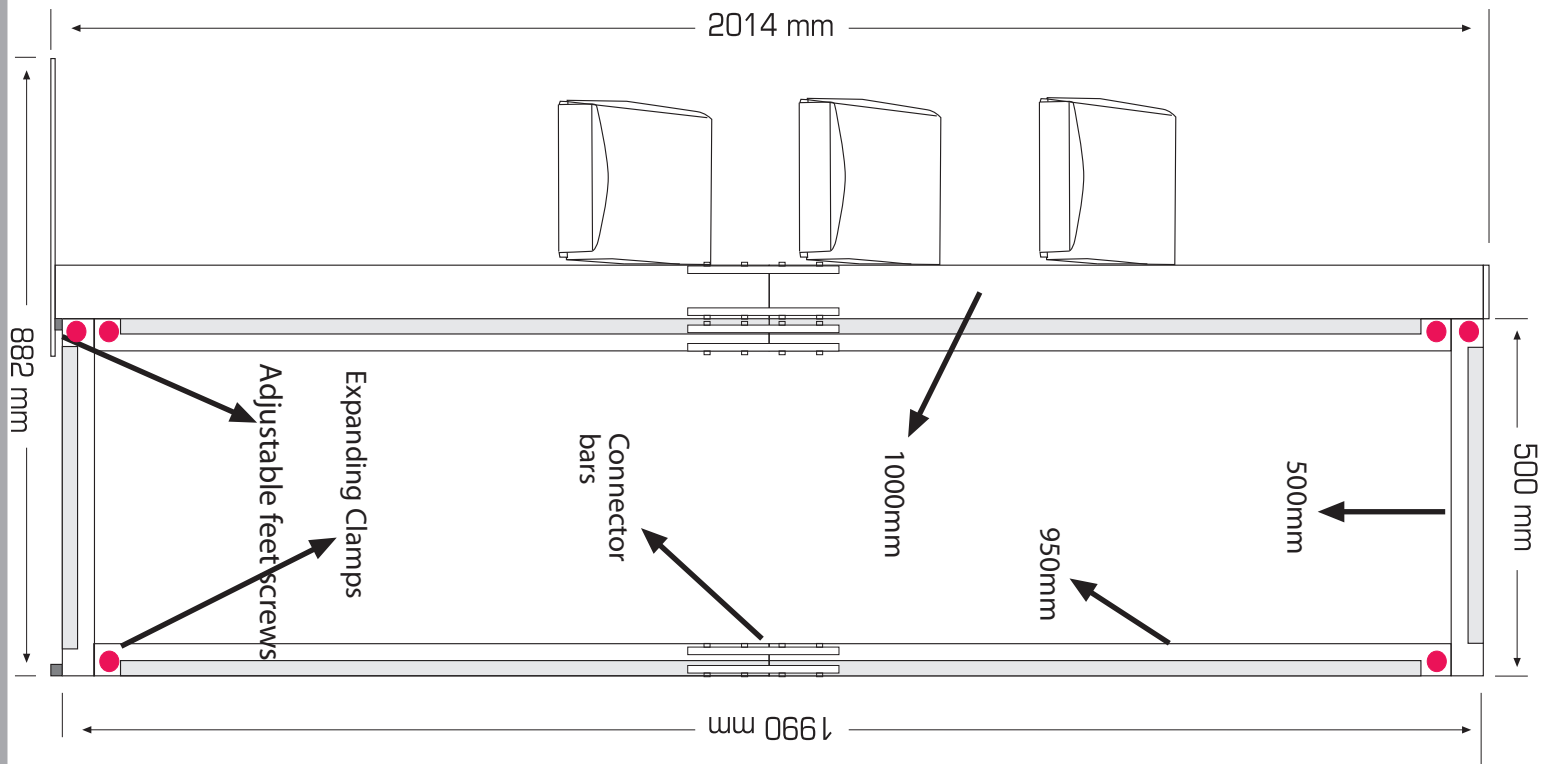


CENTRO TOTEM

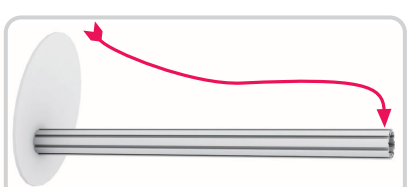
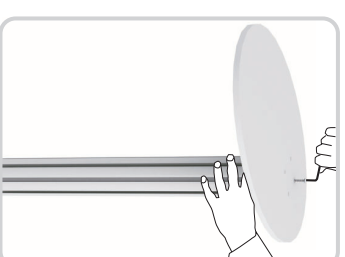


CENTRO TOTEM



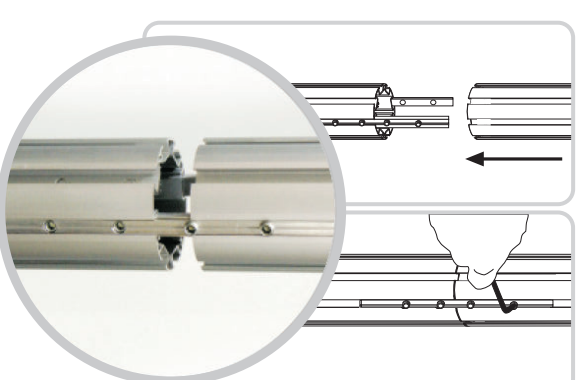
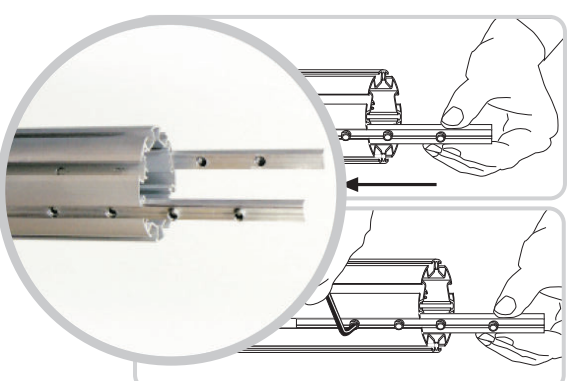


CENTRO Totem Assembly Instructions



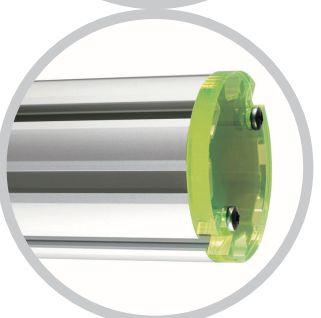
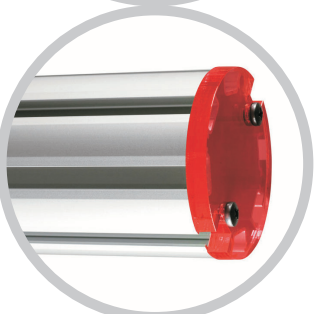
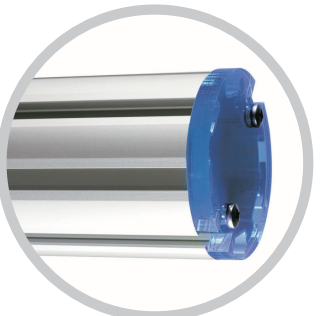
Attach base plate to lower column. Grooves containing connector bars should be at 90° to base plate

Stand base on the ground. Loosen and slide connector bar of a rack into the post.

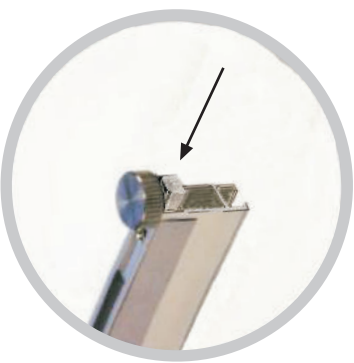


Loosen and slide connector bars half way out of groove and retighten.

Join posts and tighten the grub screws to make assembly secure. Repeat for other base post.



The adjustable feet should be screwed into the horizontal 500 mm rail used at the bottom of the system. Note position of tape.



Connect the bottom horizontal rail to the post and tighten grub screws as before.



The side straight vertical 950 mm graphic rails should now be assembled. Note position of tape strips.



Connect side vertical rails to the bottom horizontal rail. The side vertical rails have one run of tape on them. Tape should be nearest the post when viewed from the front.



Slot top horizontal rail onto all vertical rails and tighten grub screws.



Affix graphics to the tape starting from the top and side, working across the completed system.

